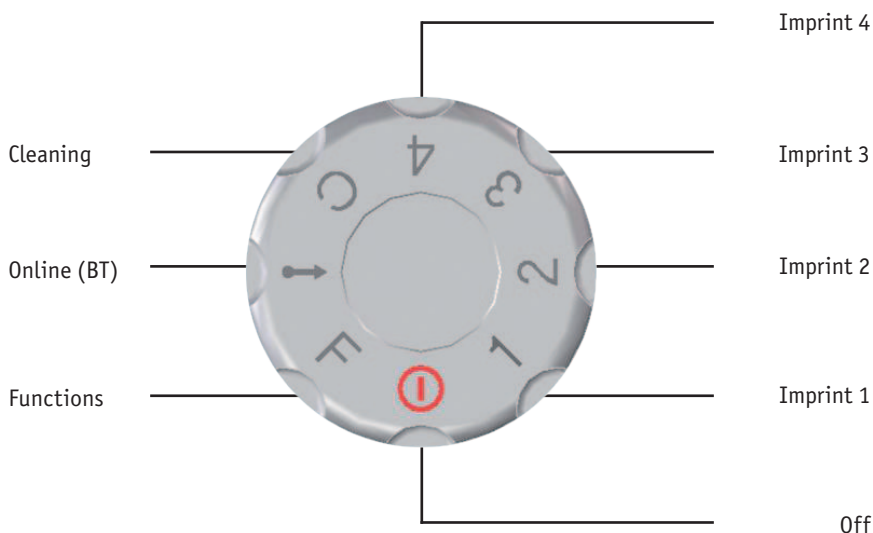


Operating elements

- | | |
|------------------------------------|---------------------|
| ① Positioning Guide | ⑧ USB Connector |
| ② Cartridge Capping Holder | ⑨ Mounting Flange |
| ③ Sensor Roller | ⑩ LED Indicator |
| ④ Print Trigger | ⑪ Selector Wheel |
| ⑤ Print Head Shutter Lever | ⑫ Cartridge Cover |
| ⑥ Shutter Lever Lock | Release Key |
| ⑦ Rechargeable Battery Compartment | ⑬ Cartridge Cover |
| | ⑭ Print Head Gasket |

Selector wheel



i **Online (BT):** This setting is currently not available

i **Functions:** In the on-line help of the PCset GRAPHIC application you can find further information about this setting.

Contents

speed-i-Marker 940

Operating elements	28
Selector wheel	28

Important information

Rechargeable batteries	31
------------------------------	----

For your safety

Icon description	32
Rechargeable battery safety advice	33
Safety instructions for <i>speed-i-Marker 940</i>	34
Safe handling of ink cartridges	34

1. Preparation and Set Up

1.1 Set Up	35
1.2 Inserting cartridge	35
1.3 Replacing print head gasket	35
1.4 Installing PCset GRAPHIC software	36
1.5 Preparing the <i>speed-i Marker 940</i> for PCset GRAPHIC	36

2. Cleaning the device

2.1 Cleaning the print head contacts	37
2.2 Cleaning the housing	37
2.3 Cleaning the print head jets	37
2.4 Cleaning the print head	38
2.5 Cleaning the print head gasket	38

3. The PCset GRAPHIC Software application

3.1 System requirements	39
3.2 Icons on the tool bar	40
3.3 Menu bar	41
3.4 Online help	41
3.5 First steps	42
3.6 Work flow example: Generate an imprint	43

4. Troubleshooting

4.1 Your <i>speed-i</i> Marker 940 does not function	45
4.2 Causes for non-charged rechargeable batteries	45
4.3 Optical (LED) signals	46
4.4 Audible signals	47

5. Technical data & accessories

5.1 Rating plate	48
5.2 Technical data	49
5.3 Transport and disposal	50
5.4 Accessories	50

6. Contact 51

7. Index 52

Important information

Before operating the *speed-i-Marker 940*, it is imperative that you read the operating manual, and especially the safety instructions very carefully. In this way, you can avoid uncertainties and their accompanying safety risks when working with the *speed-i-Marker 940*, for the sake of your own safety and to prevent damage to the device.

Rechargeable batteries

Rechargeable battery charging is electronically controlled. This guarantees that the rechargeable battery cells are charged in a way that is both optimised and thorough.

Charging

- ▶ Completely charge the rechargeable batteries before using the *speed-i-Marker 940* for the first time. This takes about three hours.

The rechargeable batteries do not reach their full capacity after the first charging. You must work on the basis that normal standby times will not be achieved.

Reaching full capacity

Full capacity is reached after the rechargeable batteries have been fully discharged and charged a number of times.

Changing the rechargeable batteries

When removing the rechargeable battery, date and number are reset.
The *speed-i-Marker 940* must subsequently be charged for about three hours.

 Before changing the rechargeable batteries connect the *speed-i-Marker 940* to the AC adapter. Date and number are retained.

For your safety

Icon description

DANGER

Warnings about risks, where non-observance of the measures causes **imminent death or serious injury**.

WARNING

Warnings about risks, where non-observance of the measures can cause **death or serious injury**.

CAUTION

Warnings about risks, where non-observance of the measures can cause **injuries**.

NOTICE

Warnings about risks, where non-observance of the measures can cause **material damage**.

- At this point you will be prompted to take action.



Information and tips to make working with your *speed-i-Marker 940* even easier.

Rechargeable battery safety advice

Rechargeable batteries are likely to deteriorate. For this reason, a longer lifespan of more than six months cannot be guaranteed.

WARNING

Risk of explosion in the case of contact with fire.

- ▶ Never throw rechargeable batteries into a fire.

CAUTION

Risk of injury due to destruction of rechargeable battery casing, if wrong rechargeable batteries or non-rechargeable batteries are used.

- ▶ Use only the rechargeable batteries provided for the device!

Type usage

Use only the supplied plug-in power supply unit or a PC USB port for charging the rechargeable batteries.

Use only AA rechargeable batteries (in pairs each time) of nickel-metal hydride type (NiMH, eneloop) with a capacity of >1200 mAh each.

Always replace used rechargeable batteries in pairs.

Non-approved batteries can cause damage or operational faults.

- ▶ Use only stipulated rechargeable batteries.

Insertion

Mind the polarity of the rechargeable batteries when inserting (see icons)!

Disposal



Do not dispose of old, defective rechargeable batteries with normal domestic rubbish.

Safety instructions for *speed-i-Marker 940*

WARNING

Risk of blindness in case ink comes in contact with eyes.

- ▶ Do not point the *speed-i-Marker 940* into people's faces (even your own)!

WARNING

This product state subjects to class A. This device may cause radio interference in a residential area.

In this case the operator may be demanded to take adequate measures.

CAUTION

Risk of tripping and damage to the device by device cables lying freely in the room.

- ▶ Install the equipment cables so that they do not constitute a safety hazard!

CAUTION

The rechargeable batteries may only be inserted, if the device is at its operating temperature.

NOTICE

Damage to the device in case of improper transportation.

- ▶ Use only the original packaging during transportation or suitable packaging that provides device protection against bumps and shocks!

NOTICE

Damage to the device due to condensation.

- ▶ If you move the device from a cold environment in the operating room, wait until the device has reached room temperature and is completely dry, before putting it in operation!


Safe handling of ink cartridges

Health risks if ink is swallowed.

- ▶ Do not swallow!
- ▶ Keep ink cartridges away from children!

1. Preparation and Set Up

1.1 Set Up

 The rechargeable batteries must be completely charged before using the stamp for the first time. This takes about three hours.

Inserting the rechargeable batteries

- ▶ Open the rechargeable battery compartment ⑦ in the direction of the arrow.
- ▶ Be careful to insert the rechargeable batteries the correct way round (+/- polarity).
- ▶ Close the rechargeable battery compartment ⑦.

Charging the rechargeable batteries

- ▶ Connect the device at the USB port ⑧ using a USB cable to the plug-in power supply unit and plug it into the mains.
 - or –
- ▶ Connect the device with the PC using a USB cable. You may observe the charging process in the PCset GRAPHIC software at the charge indicator in the lower right corner. To do this, the PC must be turned on.

1.2 Inserting cartridge

- ▶ Turn selector wheel ⑪ to **Off** position.
- ▶ Push the cartridge cover release key ⑫ downwards, to open cartridge cover ⑬.
- ▶ Take the cartridge out of its packaging and remove protective film from the jet.
- ▶ Insert the cartridge.
- ▶ Close the cartridge cover ⑬.

1.3 Replacing print head gasket

In addition to normal ink, there is also MP ink for metal and plastic surfaces. For this ink, you need the blue gasket.

- ▶ Open the cartridge cover ⑬ and remove the cartridge.
- ▶ Press and lock ⑤ the print head shutter lever.
- ▶ Loosen and remove the print head gasket with a pencil.
- ▶ Install the new print head gasket.
- ▶ Insert the MP cartridge.

1.4 Installing PCset GRAPHIC software

- ▶ Insert the PCset GRAPHIC CD in the CD drive.
- ▶ Start the "**Setup.exe**" file.
- ▶ Follow the instructions.

1.5 Preparing the *speed-i* Marker 940 for PCset GRAPHIC

- ▶ Turn selector wheel ⑪ to position **1** to turn on the device.
- ▶ Connect the *speed-i*-Marker 940 with the PC using a USB cable.



2. Cleaning the device

2.1 Cleaning the print head contacts

- ▶ Open the cartridge cover ⑬.
- ▶ Remove the cartridge.
- ▶ Press and lock ⑤ the print head shutter lever.
- ▶ With a soft cloth, possibly slightly moistened with printhead cleaning solution, clean the contacts inside the *speed-i-Marker 940*.

2.2 Cleaning the housing

The surface of the device housing may be cleaned with a soft cloth.
In case of heavy soiling, the cloth may be dipped in water with mild detergent.

-  Do not use any scouring powder and plastic-dissolving cleaning agents for cleaning.
-  Make sure that no liquid enters the interior of the device.

2.3 Cleaning the print head jets

- ▶ Turn dial to position C.
- ▶ Press print trigger ④.

WARNING

Risk of blindness in case ink comes in contact with eyes.

- ▶ Do not point the *speed-i-Marker 940* into people's faces (even your own)!

2.4 Cleaning the print head

When creation of stripes is noted or when problems with print quality occur, dried ink on the jets may be the reason.

Imprint without creation of stripes:



Imprint with creation of stripes:



We recommend the following measures:

- ▶ In order to dissolve any dried ink press a damp cloth against the print head jets for about three seconds.
- ▶ Dab slightly the jets of the print head and wipe them dry.

2.5 Cleaning the print head gasket

- ▶ Open the cartridge cover ⑬.
- ▶ Remove the cartridge.
- ▶ Press and lock ⑤ the shutter lever.
- ▶ With a soft cloth, dab the print head gasket ⑭ inside the *speed-i-Marker 940* clean.

i The gasket should be cleaned at regular intervals.
In case of heavy soiling, the gasket must be replaced.

3. The PCset GRAPHIC Software application

3.1 System requirements

Supported REINER devices:

- *speed-i-Marker 940*












Hardware:

- PC with Pentium processor (also compatible) or higher
- Graphics adapter with a min. resolution of 800 x 600 pixels (at least 256 colours; optimum: TrueColor, 24 bits, 16.78 million colours)
- RAM min. 32 MB
- 10 MB free hard disk memory space
- 1 free USB interface

Supported operating systems:

- Windows 2000
- Windows XP
- Windows XP 64-Bit
- Windows Vista
- Windows Vista 64-Bit
- Windows 7
- Windows 7 64-Bit

3.2 Icons on the tool bar

	Save	Saves the current imprints as PCset Graphic file (*. pcg)
	Settings	Configures the following parameter groups: Print sequence, clock, effects, signals, functions and format.
	Uploading	Loads the settings and imprints from REINER device into the GRAPHIC PCset application (not yet available in the 1.00 version).
	Transfer	Transfers the settings and imprints of the PCset GRAPHIC application to the <i>speed-i-Marker 940</i> . Old print images will be overwritten at the same time!
	Undo	Undoes the last action (not yet available in the 1.00 version).
	Selection	Marks objects in the print lines. This allows "Graphics", "Bar code" and "Text" objects to be highlighted.
	Text	Creates text fields. Position may be precisely moved with arrow keys. The text may be freely edited and formatted. The object is fixed by pressing Enter or by double clicking.
	Date/ Time	Creates Date/Time fields. Position can precisely be moved with arrow keys. The contents can be edited and formatted. The object is fixed by pressing Enter or by double clicking.
	Numberer	Generates numbering. Position can precisely be moved with arrow keys. The contents can be edited and formatted. The object is fixed by pressing Enter or by double clicking.
	Bar code	Generates bar code. Position can precisely be moved with arrow keys. The contents can be edited and formatted. The object is fixed by pressing Enter or by double clicking.
	Graphics	Generates graphic frames for loading BMPs, TIFs, JPGs. Position can precisely be moved with arrow keys. The object is fixed by pressing Enter or by double clicking.

3.3 Menu bar

In addition to the functions in the tool bar, you will also find a menu bar in the PCset GRAPHIC application.



In the menu bar you will find both commonly used self-explanatory menu items as well PCset GRAPHIC specific menu items. The latter are generally accessible via the icons of the tool bar.

Menu	Commonly used menu items	PCset GRAPHIC specific menu items (eg. tool bar)
File	New, open, save, save as..., exit	settings, transfer
Edit	Delete, copy, paste, cut	
Format		Text, date/time, numberer, bar code
Extras		SF module (only for manufacturer!)
Help	Help, info	

3.4 Online help

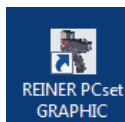
In the online help of the PCset GRAPHIC application, you can find further information about the functions and icons of the tool bar!

- ▶ In order to open the online help, select the menu item **Help** in the **Help** menu.
 - or –
- ▶ Press **F1**, when the PCset GRAPHIC is open.

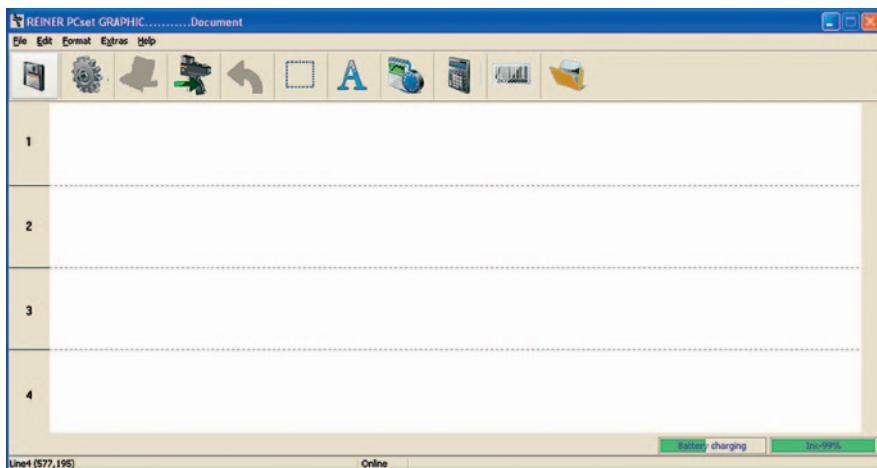
3.5 First steps

Starting of the software


- Double click on the **REINER PCset GRAPHIC** icon.





The PCset GRAPHIC software is open.

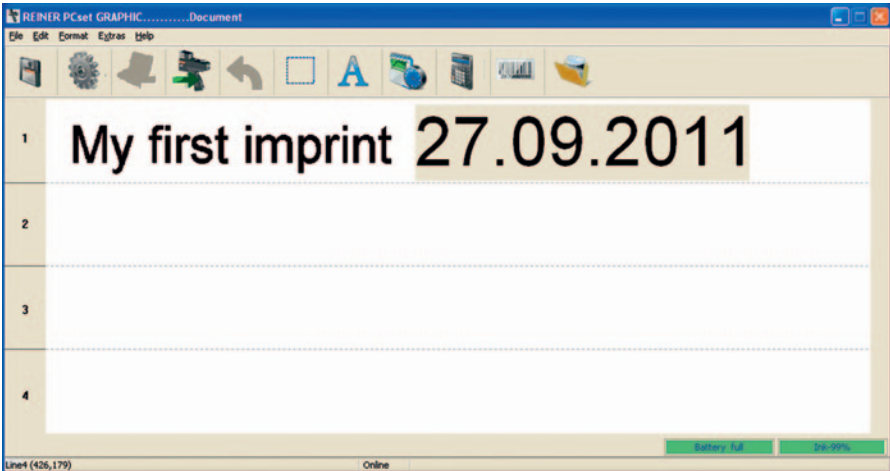


3.6 Work flow example: Generate an imprint


 Format the text via the **Format** menu item. Format date/time via the **Settings** menu item.

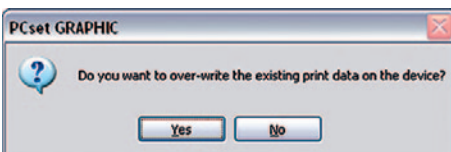
Inserting text and date/time

- ▶ With the left mouse button, drag the text icon  into line 1 (imprint 1) and release it in the desired position to create a text box.
- ▶ Type the desired text into the text field.
- ▶ Double click in the text box to fix the **text**.
- ▶ With the left mouse button, drag the **date/time** icon  into line 1 (imprint 1), release it in the desired position and double click.



Transfer the print image to the speed-i-Marker 940

- ▶ Click on the **Transfer** icon .
- ▶ Confirm the following dialogue box with **Yes**.



A few seconds after a successful transfer the following message appears.



- Confirm this message with **OK**.

Printing imprint

- Turn selector wheel ⑪ to 1 (imprint 1).
- Pull print head shutter lever ⑤ towards the device.
- position *speed-i-Marker 940* on the printing surface.
- Release the print trigger ④.
- Unroll the device with a constant velocity in the direction of printing.



Your imprint has been printed.

My first imprint 26.09.2011

4. Troubleshooting

4.1 Your *speed-i* Marker 940 does not function

Problem solving

- ▶ Remove the rechargeable batteries.
- ▶ Unplug the USB cable from the *speed-i*-Marker 940.
- ▶ Insert the rechargeable batteries again.
- ▶ Plug the USB cable to the *speed-i*-Marker 940.
- ▶ Plug the USB cable to the PC.
- ▶ Turn on the *speed-i*-Marker 940.
- ▶ Start the PCset GRAPHIC.
- ▶ Check whether the rechargeable battery is charged.

4.2 Causes for non-charged rechargeable batteries

- No rechargeable batteries inserted or incorrectly inserted rechargeable batteries.
- Faulty contact in the rechargeable battery compartment.
- Rechargeable battery temperature is above 40 degrees Celsius.
- The rechargeable batteries are out of date.
- The rechargeable batteries are defective.
- The rechargeable batteries are completely discharged (deep discharge).

Capacity and service life

The rechargeable batteries reach their full capacity after repeated charging and discharging. With increasing ageing of the rechargeable battery the potential operating time will shorten.

Rechargeable batteries are likely to deteriorate. A lifespan of longer than 6 months cannot be guaranteed.

4.3 Optical (LED) signals



When the LED indicator flashes orange, you will find a detailed error analysis in the PCset GRAPHIC software.

There you will also see the current rechargeable battery level and the current colour reserves of the ink cartridge.

LED indicator	Status	Cause	Rectification	Notes
Green		Operational		
Orange (Warning)	Flashing once	<ul style="list-style-type: none"> - defective ink cartridge or no ink cartridge - Wrong cartridge - Ink-level mis-indication - Ink cartridge is not inserted correctly - Rechargeable battery empty - No rechargeable battery / faulty rechargeable battery 	<ul style="list-style-type: none"> - Insert ink cartridge - Insert ink cartridge correctly - Charge the rechargeable battery - Insert/replace rechargeable battery 	The detailed cause and rectification can be determined by the PCset GRAPHIC software with connected speed-i-Marker 940.
Orange (Warning)	Flashing twice	<ul style="list-style-type: none"> - Ink cartridge almost empty - Print speed is not ok 	<ul style="list-style-type: none"> - Check imprint 	<ul style="list-style-type: none"> - also audible signal - Continuous movement necessary
Orange (Warning)	Flashing 3 times	<ul style="list-style-type: none"> - Ink cartridge empty 	<ul style="list-style-type: none"> - Replace ink cartridge 	<ul style="list-style-type: none"> - Also audible signal
Orange (Warning)	Flashing 4 times	<ul style="list-style-type: none"> - Lock is open 	<ul style="list-style-type: none"> - Close lock 	<ul style="list-style-type: none"> - Also audible signal
Orange (Warning)	Flashing 5 times	<ul style="list-style-type: none"> - Rechargeable battery almost empty / weak capacity 	<ul style="list-style-type: none"> - Charge / change rechargeable battery 	<ul style="list-style-type: none"> - Also audible signal
Red (error)	Flashing once	<ul style="list-style-type: none"> - Device failure 	<ul style="list-style-type: none"> - Disconnect the device for about 10 seconds from the mains supply (rechargeable batteries and USB connection as well). 	<ul style="list-style-type: none"> - If the error persists after restarting, the device must be repaired.

4.4 Audible signals

Signal	Cause	Rectification	Notes
Continuous tone	- Print speed is not ok	- Check imprint	- Continuous movement necessary
1 Bleeb	- Print start - Print end - When in stepping function and if, while the dial is in function (F) position, the print trigger is activated.		
1 Bleeb every 10 seconds	- None or a defective ink cartridge - Wrong cartridge - Ink-level mis-indication - Ink cartridge is not inserted correctly - Rechargeable battery empty - No rechargeable battery/faulty battery	- Insert ink cartridge - Insert ink cartridge correctly - Charge the rechargeable battery - Insert /replace rechargeable battery	The detailed cause and rectification can be determined by the PCset GRAPHIC software with connected <i>speed-i-Marker 940</i> .
2 Bleeps every 30 seconds	- Ink cartridge almost empty	- Check imprint	
3 Bleeps every 10 seconds	- Ink cartridge empty	- Replace ink cartridge	
4 Bleeps every 10 seconds	- Lock is open	- Close lock	- Risk of ink drying - The signal becomes of higher frequency and more penetrating, the longer the lock remains open - The signal ends when the lock is closed again or a new imprint is carried out.
5 Bleeps per minute	- Rechargeable battery almost empty/ weak capacity	- Charge / change rechargeable battery	


5. Technical data & accessories

5.1 Rating plate

Please take note of the information shown on the rating plate before connecting the device.

Nameplate is located on the inside of the print head lock of the *speed-i-Marker 940*.

Explanation:

- SN = Serial number
-  = *speed-i-Marker 940* meets the requirements of EC Directives 2004/108/EC. Therefore the device bears the CE marking.

Disposal

Directive 2002/96/EC (WEEE)






Electrical and electronic equipment as well as rechargeable batteries do not belong in the house or residual waste.

Please dispose of your used devices in an environmentally-aware manner.

5.2 Technical data

Dimensions	47 x 147 x 221 mm (W x D x H)
Weight	approx. 530 g
Max. imprint dimensions	140 x 12.7 mm (W x H)
Max. print speed	400 mm/s
Print resolution	300 dpi
Rechargeable battery capacity	Up to 1000 imprints
Print technology	Inkjet
Bar code print	EAN 8, EAN 13, 2/5 Interleaved, Code 39, Code 39 Full ASCII, Code Codabar
Graphics	BMP, JPG, TIFF
Marking	Flexible from top and laterally With the position sensor by rolling, alternatively contactless or external clocks
Ambient temperature for operation	10 °C ... +40 °C
Temperature for storage and transportation	-20 °C to +60 °C (up to 48 hours)
Humidity for operation	30 % ... 70 % relative humidity
Humidity for storage and transportation	10 % ... 90 % relative humidity
Data transmission	USB, Bluetooth (optionally)
Power supply	2 x AA NiMH rechargeable battery Chargeable through supplied power supply unit. Input: 100 - 240 VAC, 50 - 60 Hz, 0.3 A Output: 5 VDC 1 A
Standby time per rechargeable battery charge	approx. 48 hours
Rechargeable battery charging time	approx. three hours
Print capacity per ink cartridge	up to 5,000 imprints depending on ink and print mode
Type of protection	IP 20

Certificate


-  = *speed-i-Marker 940* is manufactured in accordance with the IEC/E 60950-1 safety standards
-  = *speed-i-Marker 940* is in accordance with the following standards or standardized documents FCC 47 CFR Ch.1 Part 15
Bluetooth: FCC: R7TAMB2300
-  = Safety of Information Technology Equipment

5.3 Transport and disposal

Transport

Please store the packaging of the *speed-i-Marker 940* carefully, because it serves as protection during transport.

Disposal

- Directive 2002/96/EC (WEEE)
-  Electrical and electronic equipment as well as rechargeable batteries do not belong in the house or residual waste.
- Please dispose of your used devices in an environmentally-aware manner.

Used devices contain valuable recyclable materials that should be recycled.
Therefore, used devices should be disposed of at recognised collection points.

5.4 Accessories

Inkjet cartridges
Standard black: Ref. no.: 947 100 - 000 P3-S-BK

6. Contact

Ernst Reiner GmbH & Co. KG

Baumannstr. 16

78120 Furtwangen / Germany

Phone: +49 7723 657-0

Fax: +49 7723 657-200

e-mail: reiner@reiner.de

www.reiner.de

© 2011 Ernst Reiner GmbH & Co. KG

All rights reserved. Translations, reprints and other reproductions of this Operating Manual, even in part and in whatever format, require our express, written permission. We reserve the right to make content-related changes in this manual without prior notice. This manual has been prepared with care; we may not be held liable, however, for any errors or omissions or for any damages resulting thereof.

7. Index

B

Rechargeable batteries	
- Rechargeable battery safety advice ..	33
- Charging	31
- Inserting	33

C

Cartridge	
- Inserting	35
Cleaning	
- Housing	37
- Print head	38
- Print head contacts	37
- Print head gasket	38
- Print head jets	37

D

Disposal	50
----------------	----

F

Function	28
----------------	----

I

Imprint	
- Creating	43
- Printing	44

M

Menu bar	41
- Preparing <i>speed-i-Marker 940</i>	35
- System requirements	39
- Tool bar	40

O

Operating elements	28
--------------------------	----

P

PCset GRAPHIC	39
- First steps	42
- Installing	36
Printhead gasket	
- Cleaning	38
- Changing	35

S

Safety instructions	34
Selector wheel	28
Set up	35
Signals	
- Audible signals	47
- Optical signals	46
Software	
- PCset GRAPHIC	39
<i>speed-i-Marker 940</i>	1

T

Technical Data	49
Transport	50



Award for
Operational
Excellence

REINER
www.reiner.de

geprüft & zertifiziert

